

# NetCamCenter 使用手冊

## 目錄

1. 快速使用說明 .....	2
1.1 系統建議 .....	3
2. 安裝 NetCamCenter .....	6
2.1 安裝 NetCamCenter .....	6
2.2 初次使用 NetCamCenter .....	8
2.3 瞭解 CamCenter .....	10
2.4 影像視窗 .....	13
3. 操作 NetCamCenter .....	17
3.1 NetCamCenter 工具列 .....	17
3.2 新增 IP 攝影機 .....	17
3.3 Web 伺服器 .....	19
3.4 用戶管理 .....	20
3.5 替換攝影機或裝置順序 .....	22
3.6 Intel Quick Sync .....	23
4. 影像視窗 .....	24
4.1 控制 PTZ 攝影機 .....	24
4.2 設定 PTZ cruise .....	25
4.3 數位 PTZ .....	27
4.4 調整影像擷取裝置的聲音與影像 .....	28
4.5 字幕 Configuring caption for a capture device .....	29
5. 遠端監看 .....	30
5.1 即時監看 .....	30
5.2 使用手機與平板遠端監看 .....	31
6. 網路攝影機錄影 .....	32
6.1 設定網路攝影機錄影 .....	32
6.2 串流 .....	34
6.3 設定硬碟剩餘空間及循環錄影 .....	36
6.4 上傳網路攝影機錄影檔案至雲端 .....	36
6.5 搜尋錄影檔案 .....	38
6.6 錄影檔案維護 .....	40
7. 設定動作偵測 .....	41
8. 排程 .....	45
9. 設定 email 伺服器 .....	46
10. 重設 IP 攝影機 .....	47

# 1. 快速使用說明

Setting up NetCamCenter software for surveillance is fairly easy. Here are the simple steps:

**Step 1: [Install the software.](#)**

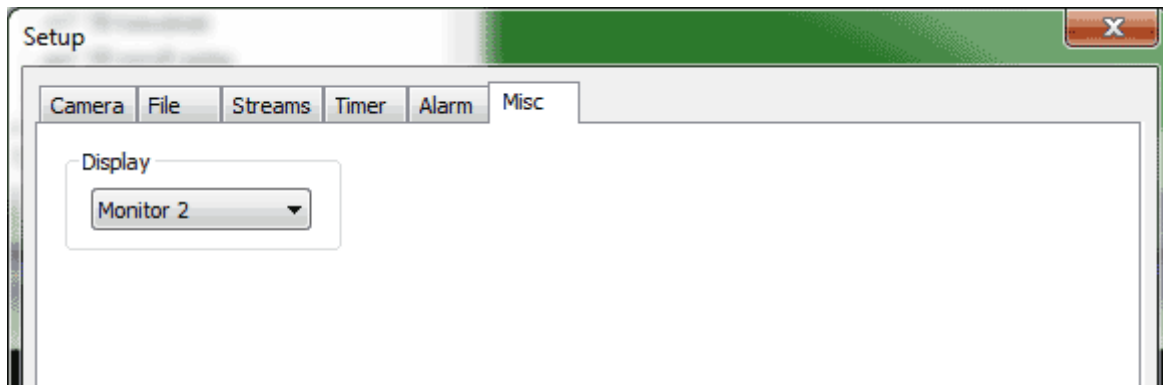
**Step 2: [Add devices](#)**

**Step 3: To setup for continuous recording.**

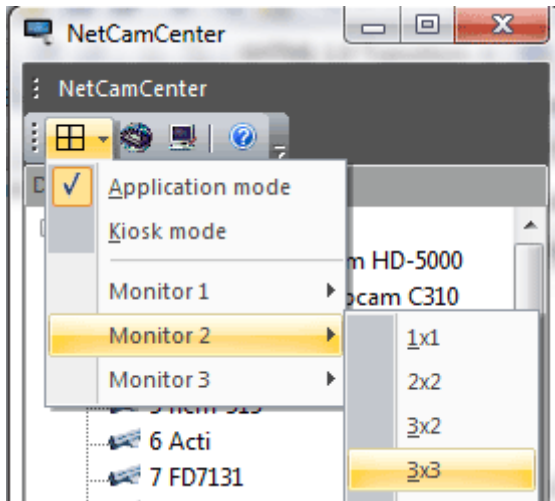
On the same Setup dialog box in Step 2, select "Turn recorder on" in DVR box.

**Step 4: Arrange video windows**

If you have only one monitor, skip and go to the next screen shot. To setup NetCamCenter for multiple monitors, select the video window, click on Setup, Misc tab to assign the video to particular monitor. E.g this screen shot assigns the video to use 2nd monitor.



Next, on CamCenter, select the menu item on the toolbar to arrange the video windows. E.g. the following screen shot shows how to have NetCamCenter arranges the video windows that are assigned to monitor 2 on 3x3 layout. You can have different layout for each monitor. E.g. 3x3 on monitor 1 and 1+5 on monitor2, ...etc.



You may want to then click on X (Close) button on the caption bar. The will minimize CamCenter window to system tray while all video windows stay on the screen. You can right click on CamCenter icon on system tray, select Restore to restore CamCenter window.

If you are running NetCamCenter with other software, you can always click on CamCenter icon on Windows Taskbar, or Restore on system tray, to bring up all video windows.

### Step 5: Recommended system settings.

While NetCamCenter will attempt to run continuously, your hardware, drivers and other software may override it. It is recommended you manual config those settings.

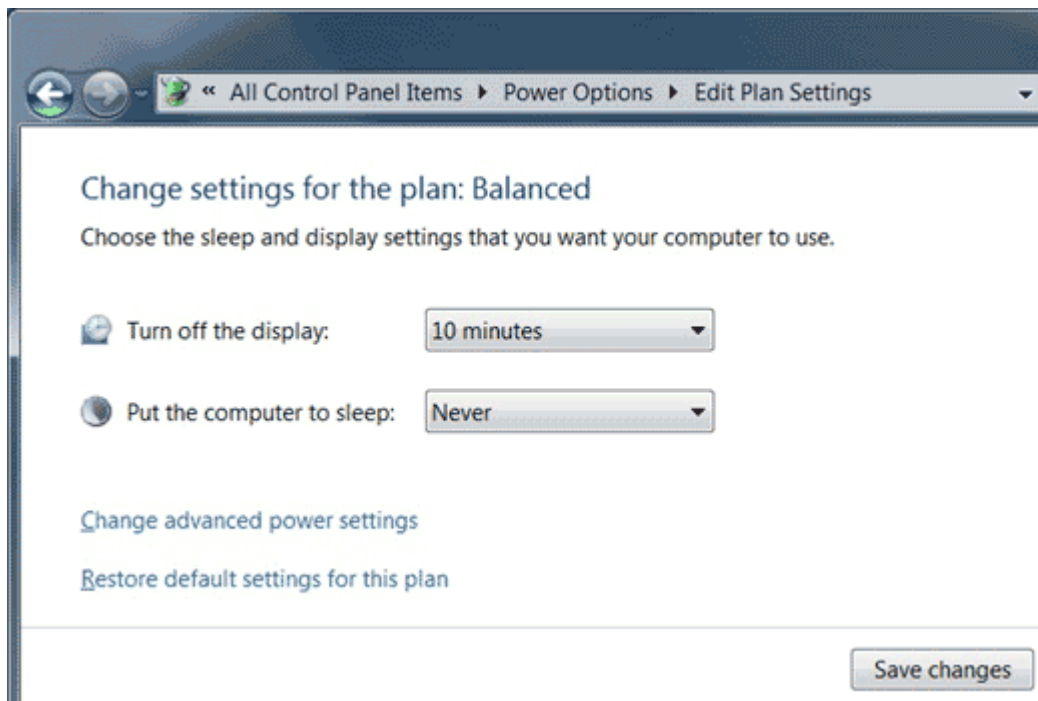
## 1.1 系統建議

Before you run NetCamCenter, please optimize your Windows to run NetCamCenter.

- Disable hibernation
- Check the Power Management of your network device.

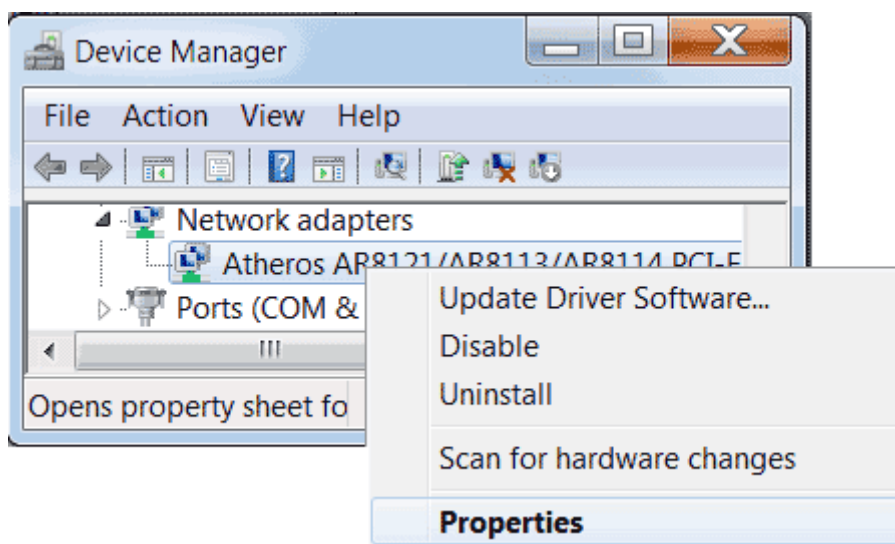
### Disable hibernation

- Go to Control panel and then click **Power options**.
- Click **Change Plan settings**.
- On the **Change settings** for the plan page, select **Never** for **Put the computer to sleep**.

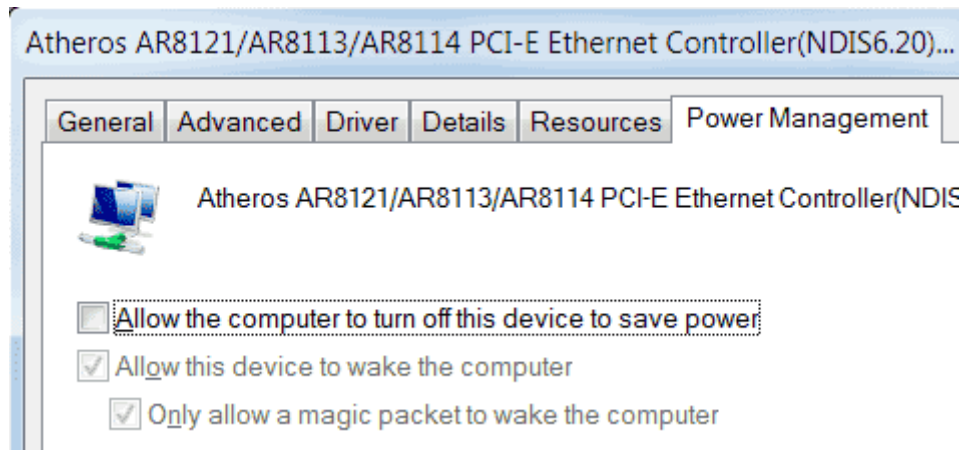


### Check Power Management of your network device

- Go to Control panel and then click **Device Manager**.
- Click on **Network adapters**, and then select your network adapter. Right-click on your network adapter and select **Properties**.



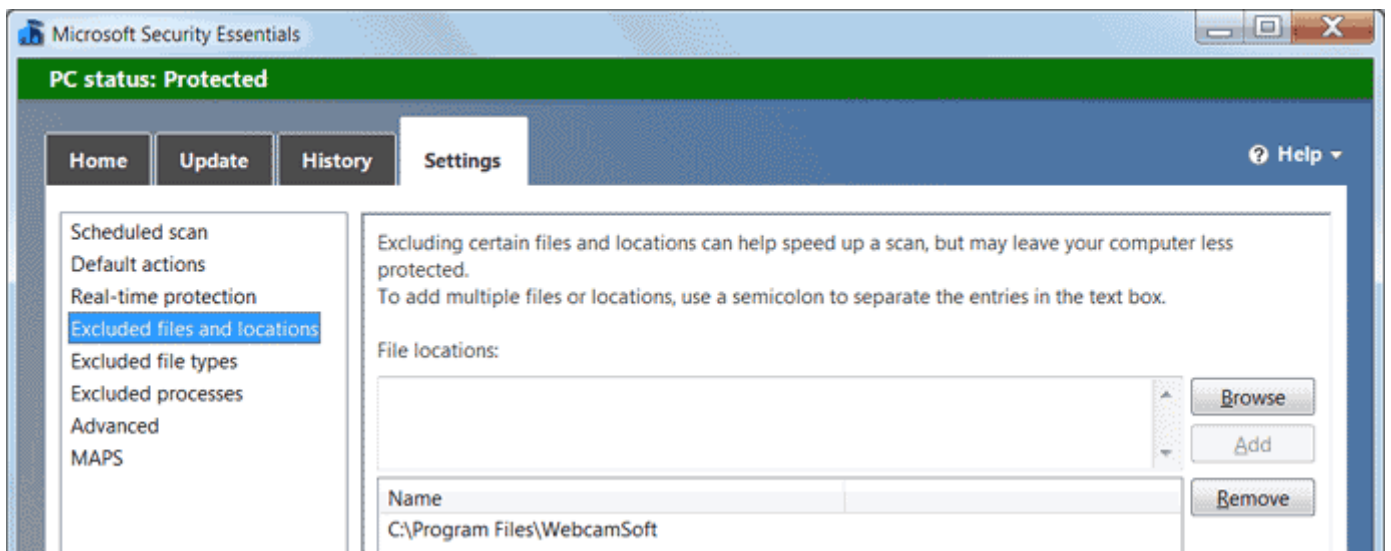
- Uncheck **Allow the computer to turn off this device to save power**.



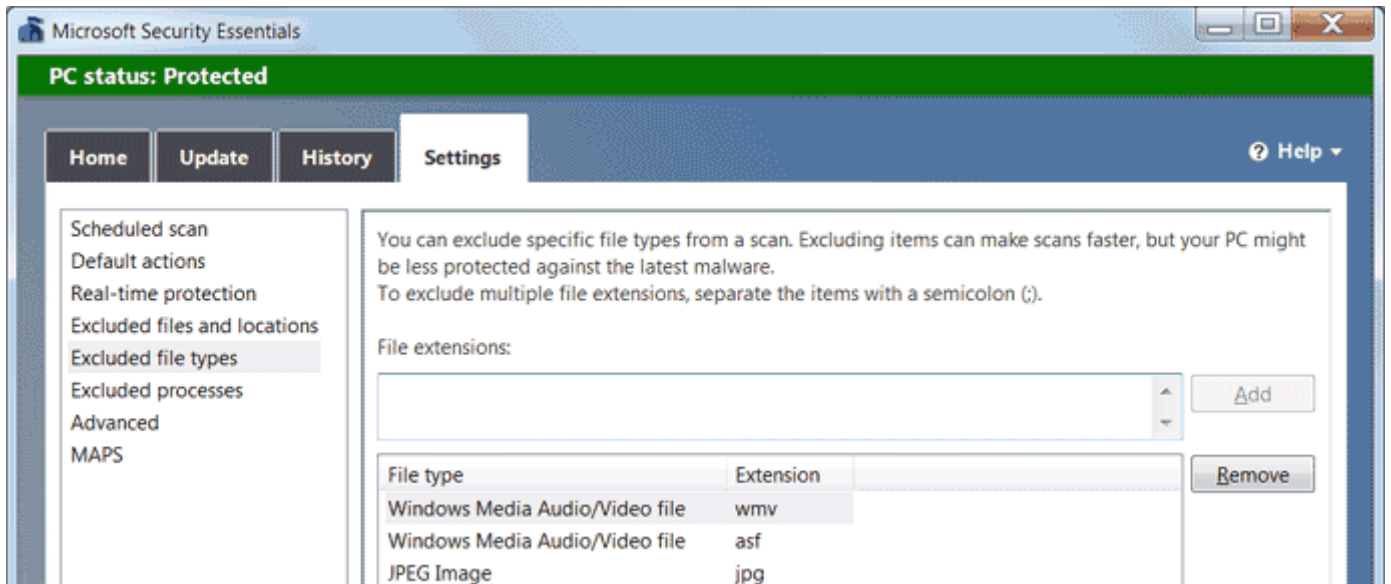
## Configure Microsoft Security Essentials

Please refer to the steps below to configure Microsoft Security Essentials. (**Note: you may want to turn off Schedule scan to avoid slowing the system performance.** )

1. Double-click **Microsoft Security Essentials**.
2. Go to **Settings** tab.
3. Click **Excluded files and locations**. Click **Add**.
4. Select the folder where **NetCamCenter** is installed. Click **Save changes**.



5. Click **Excluded file types**. Click **Add**.
6. Enter **\*.wmv**.
7. Click **Add**. Enter **\*.asf**.
8. Click **Add**. Enter **\*.jpg**. Click **Save changes**.



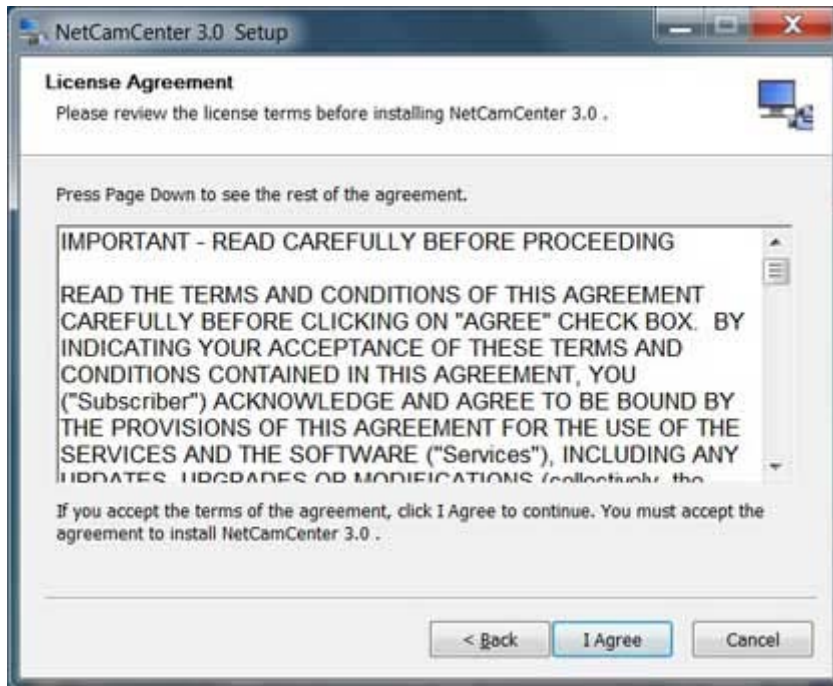
## 2. 安裝 NetCamCenter

### 2.1 安裝 NetCamCenter

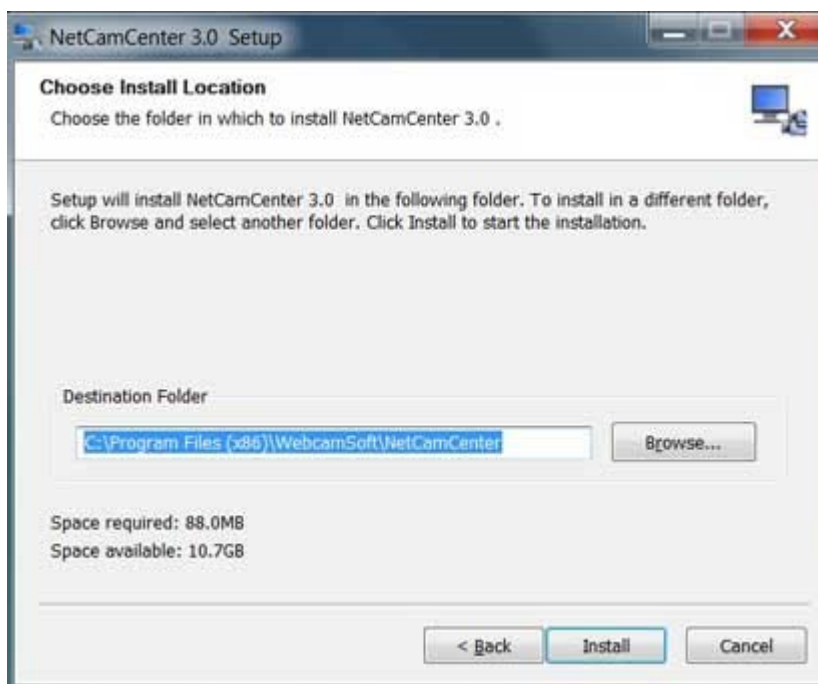
1. To install NetCamCenter 3.0 on a 64-bit version the Windows operating system, run ncc3\_x64.exe or ncc3pro\_x64.exe to begin installation. To install NetCamCenter 3.0 on a 32-bit version of the Windows operating system, run ncc3\_x86.exe to begin installation.
2. Select a language. Click Next.



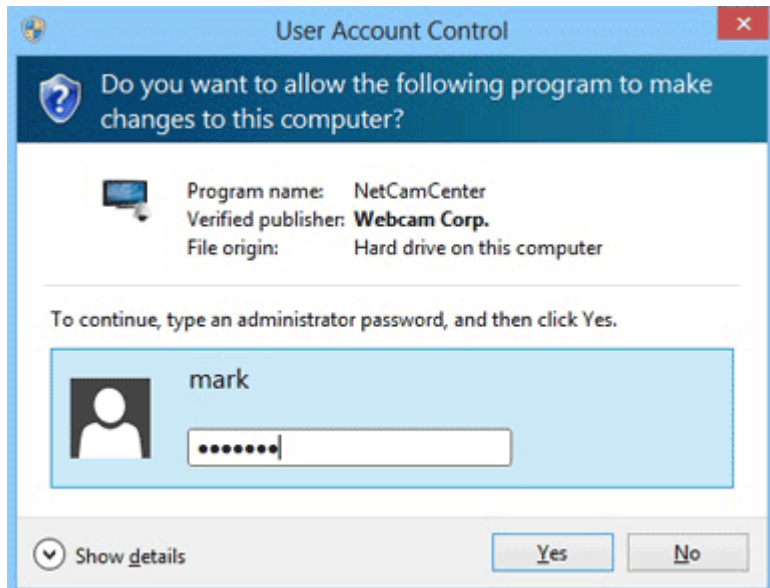
3. Click **I Agree**.



4. Click **Install** or click **Browse** to select a folder for NetCamCenter.

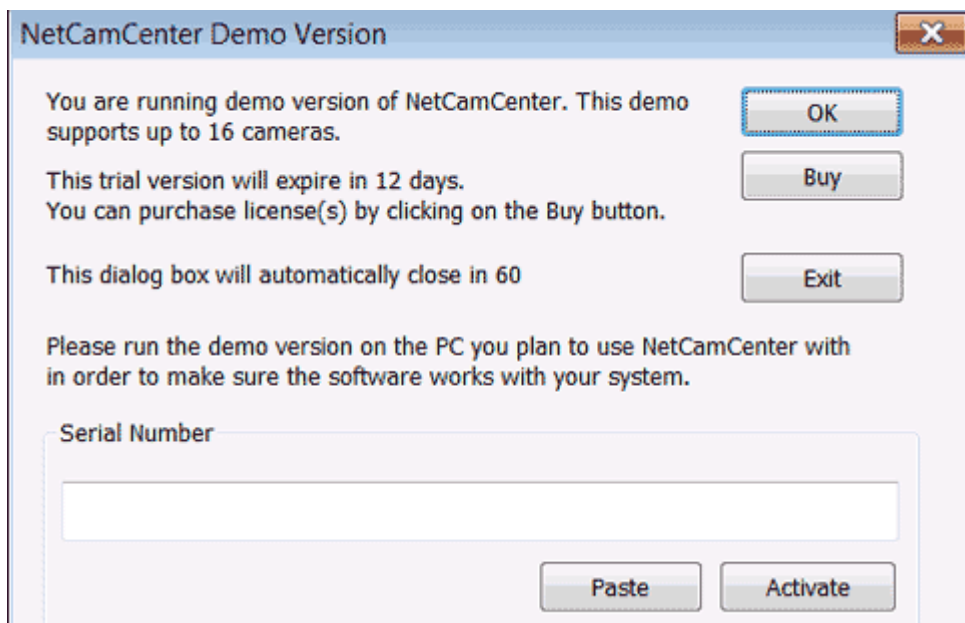


5. You will need to have administrator's permission to install NetCamCenter. When you see the following dialog, please enter an administrator's username and password



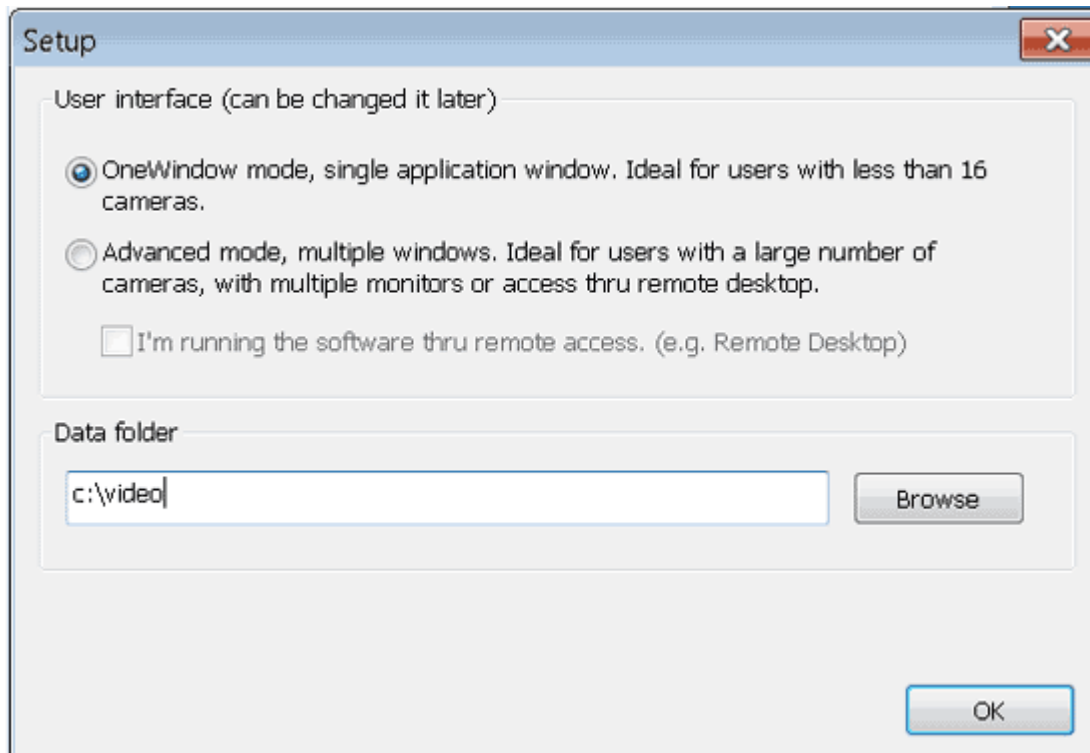
## 2.2 初次使用 NetCamCenter

在桌面點兩下 NetCamCenter 後會出現下列視窗（出現的視窗以您安裝的版本會有不同）

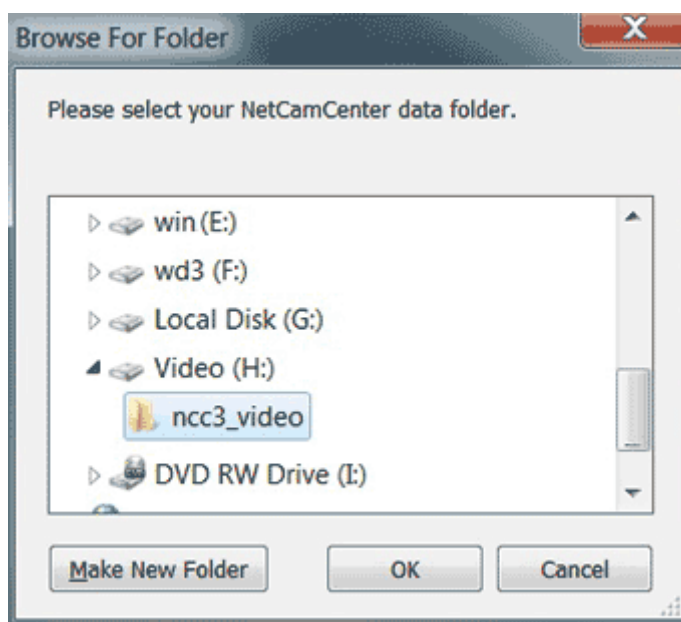


1. 初次啟動時會提示您設定資料目錄。此目錄包含您的錄影檔案。您可再稍後修改攝影機錄影資料路徑



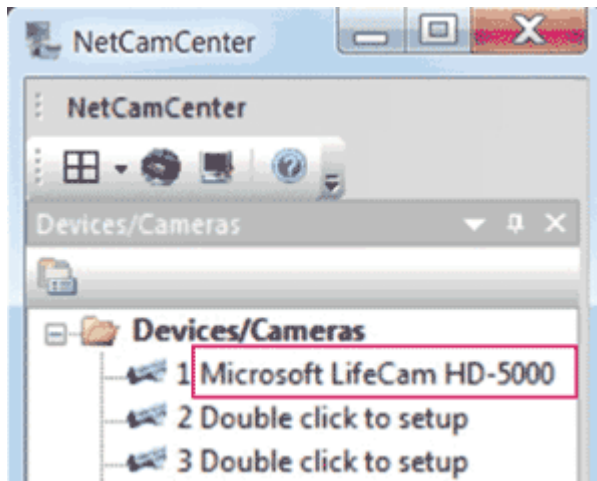


2. 您可按下 **Browse** 以選擇目錄



3. 完成後即會顯示 CamCenter

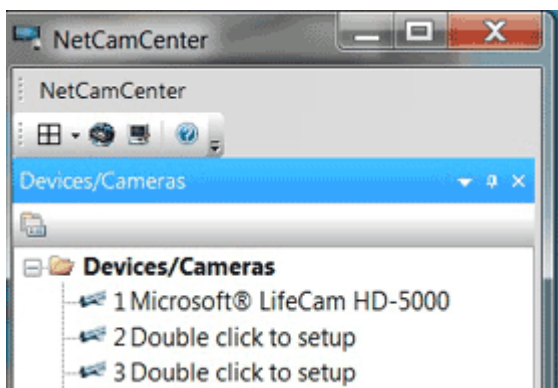
要設定影像擷取裝置或是新增 IP 攝影機請在裝置名稱上點兩下



CamCenter

## 2.3 認識 CamCenter

啟動 NetCamCenter 後會出現如下畫面。若是 NetCamCenter 偵測到 DirectX 相容擷取裝置, 則會列出該裝置名稱



CamCenter

### 攝影機清單

請直接點選擷取裝置或是按下 "Double click to setup" 以新增網路攝影機

### 顯示模式

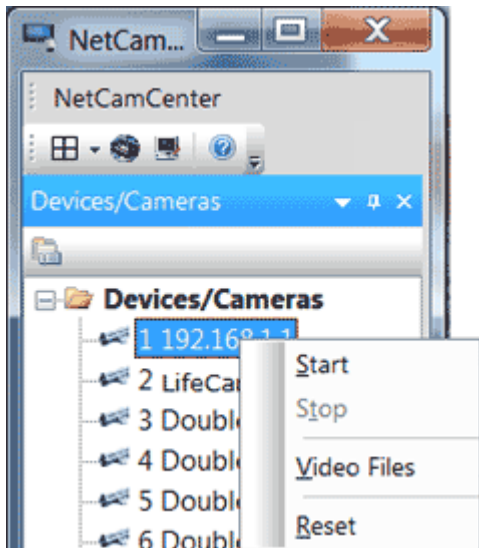
- 應用模式  
在應用模式下, 您可看到影像視窗的工具列及上方名稱列
- Kiosk 模式  
在 Kiosk 模式下, 影像視窗的工具列及上方名稱列皆被隱藏. 若要更改攝影機設定, 您可在影

像視窗上按右鍵選取設定

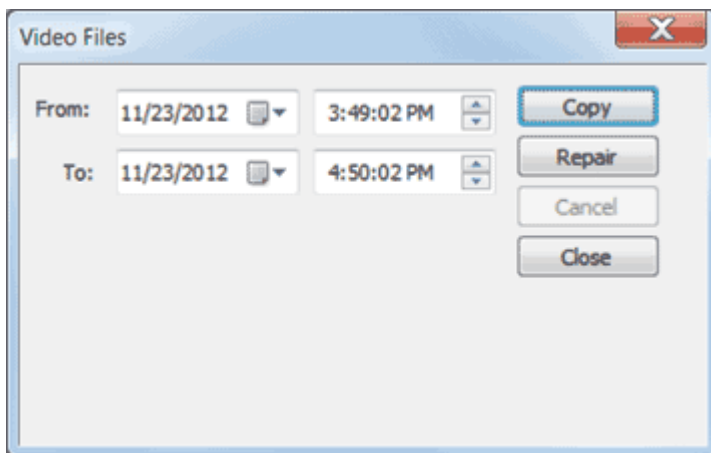


## 錄影檔案

您可已在攝影機清單中,選取攝影機,按下右鍵以進行檔案複製.

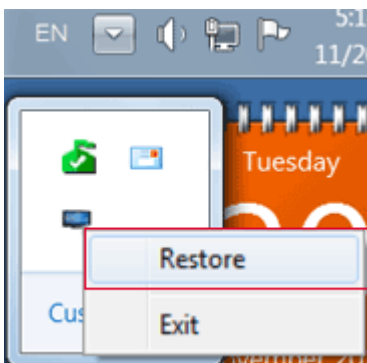


選擇 **Video Files** 後, 會顯示下列視窗讓您選擇時間以及拷貝或是修復錄影檔案無法快轉

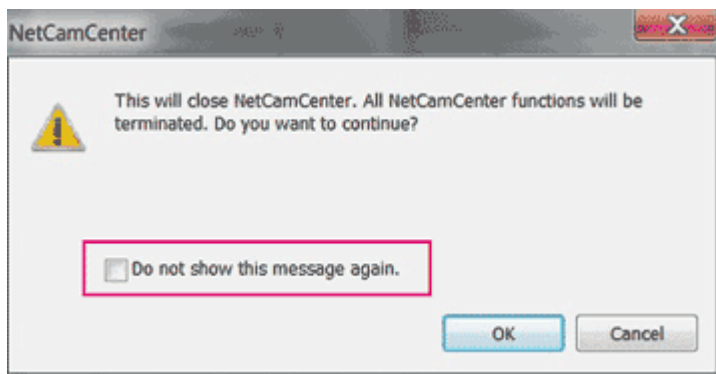


## Restore CamCenter

當您在 CamCenter 按下關閉時, NetCamCenter 會隱藏到工作列. 若是要顯示,請在系統狀態列選擇 NetCamCenter 圖示並按右鍵 選擇 **Restore**. 即可顯示 NetCamCenter 視窗



當您在系統狀態列按下 **Exit**, 會出現下列視窗提示您 此動作將關閉 NetCamCenter, 是否要繼續. 您可以在 **Do not show this message again** 已關閉提示



## 2.4 影像視窗

After connecting to a network camera, you will see a video window as the following screen.

- Video window of a network camera or video server

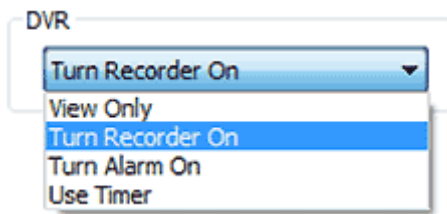
Bandwidth usage and camera compression method such as H.264 are displayed on the top of the video.



Video window of a network camera or video server

The camera name is displayed on the title bar. To set up a camera name, click Setup and then select **Device** tab. Enter desired name in the **Description** field. Click OK.

### DVR mode



- **View only**

Display the live video only.

- **Turn Recorder on**

To record video continuously, select **Turn Recorder on**.

- **Turn Alarm on**

To record video only when motion is detected, select **Turn Alarm on**. Please configure motion detection after selecting this option.

- **Use Timer**

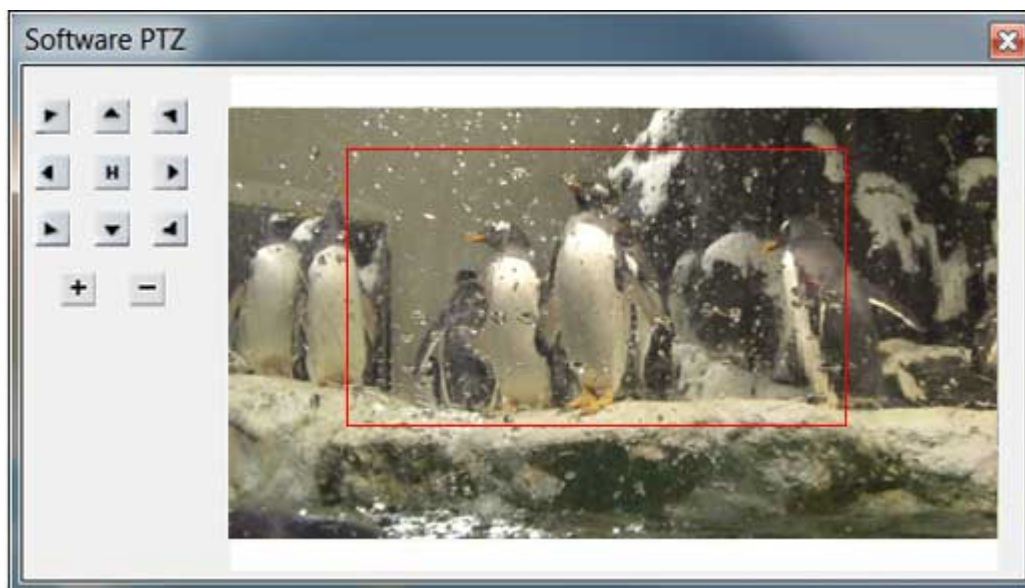
If you wish to record video or enable motion detection for a certain time, you can enable **Use Timer**. Please add a schedule

## Software PTZ

- You can drag and select an area on a video window to zoom in. Note this feature is not applied to capture device or USB camera.



- After dragging an area, a software PTZ window will be displayed and allows you to control the area for zoom in. Just click the button on the left pane to move the red rectangle to adjust the selected area.



- The video window below shows the area where you adjust the red rectangle to the desired position.



- Double-click on the center of a video window to display the camera in full screen and double-click again to restore down. If the camera is a PTZ network camera, you can click on a position to move the camera view to center.

## Quick menu

You can right click on the video window to

1. If audio is enabled, you can select **Speaker** to listen to the audio. (If **Speaker** is grayed out audio is not enabled.)
2. To adjust audio volume, simply select **Audio Volume** and use the slider to adjust volume. (Note: Audio Volume is not applied to network camera.)
3. To change the video window layout as Kiosk mode, simply select **As Kiosk mode**.
4. Select **Setup** will open the Setup window of the device and allows you to configure your device.

Speaker
Audio Volume
As Kiosk mode
Setup



## 3. 操作 NetCamCenter

### 3.1 NetCamCenter 工具列



讓您選擇顯示模式, 例如 2x2



設定按鍵



此按鍵支援影像擷取裝置,用來修改影像亮度及飽和度等等



啟動 Windows Explorer 以檢視錄影資料夾



PTZ 功能鍵



提供您查詢錄影檔案



檢視 NetCamCenter 版號.

### 3.2 新增網路攝影機

在桌面點兩下 NetCamCenter 圖示以啟動程式, 請 在 CamCenter 攝影機選單中選擇空的攝影機號碼, 按“開啟”。您會看到如下的視窗, 讓您輸入攝影機資料。

1. 在網路攝影機設定頁, 選擇廠牌及型號.
2. 輸入 IP 或是網址及通訊埠。關於通訊埠, 請參考 您的網路攝影機設定。大部分攝影機預設值為 80。

**裝置設定**

廠牌 ONVIF 型號 ONVIF v 1.0 ?

顯示名稱  HTTP 通訊埠 80 ONVIF

IP 位址 192.168.8.66

帳號 root 串流 1 通訊協議 RTSP-HTTP

密碼 ●●●●●● 頻道 1 壓縮 AUTO

聲音 ☐ 啟用聲音

參數

執行模式

啟動錄影

3. 若您連接的是影像伺服器，可輸入頻道號碼。若您使用的是 Vivotek 硬體，也可在此輸入攝影機串流代號。如 1 表示 stream 1, 2 表示 stream 2。
4. 若您的裝置連線時必須輸入帳號密碼，請在此輸入用戶名稱及密碼
5. 通訊協定

請根據您的攝影機支援的通訊協定選擇攝影機傳輸的方式

Protocol HTTP

Codec HTTP  
HTTPS  
RTSP-HTTP  
RTSP-UDP

**HTTP:** 為多數 MJPEG 攝影機所使用.

**RTSP:** 請參考您的攝影機手冊觀察看是否支援 RTSP

Maker Axis Communications Model 5.x firmware with PTZ

Camera cam1 HTTP Port 80

Address 192.168.1.1

Username admin Stream 1 Protocol RTSP-HTTP

Password ●●●●●●●● Channel 1 Codec H264

Audio ☒ Enable audio

## 6. RTSP 通訊埠

預設值為 554. If RTSP-HTTP is selected, for most of the cameras, this is usually the same as the HTTP (web server) port. However, some cameras are unable to stream from the web server port, you will have to assign the proper RTSP-HTTP port number.

## 7. 編碼方式

Some IP cameras allow users to select streaming codec. Here's the general rule for choosing a codec is:

- a. **MJPEG** - Allows you to seek to certain point easily, and provides shorter delay. However, MJPEG consumes more bandwidth and storage.
- b. **H264/MPEG4** - Seeking to a precise point, fast forwarding are not as good as MJPEG. However, H264/MPEG4 consumes less bandwidth as some IP cameras allow users to select streaming codec. Here are the general rule for choosing a codec:

## 8. IP 或是網址

輸入攝影機的 IP 位址

## 9. 串流

Some cameras provide multiple streams. Use the drop down list to select the stream.

## 10. 頻道

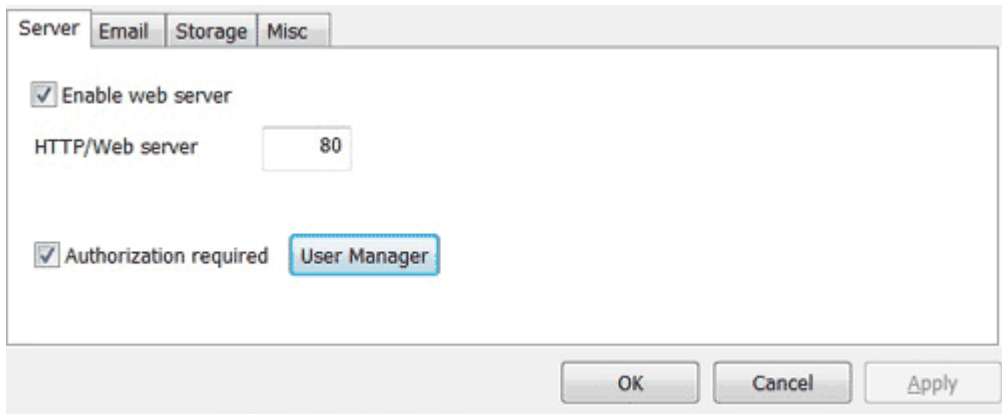
If you are connecting to a multiple channel video server, you can select the channel number.

## 11. 啟動聲音

**You can check this box to record audio from the camera or video server. Please see [hardware compatibility list](#) for compatible IP cameras.**

# 3.3 Web 伺服器

NetCamCenter 內建 Web 伺服器,欲修改 Web 伺服器設定,按 CamCenter 上的設定 -> 到 伺服器。(此功能僅限專業版)

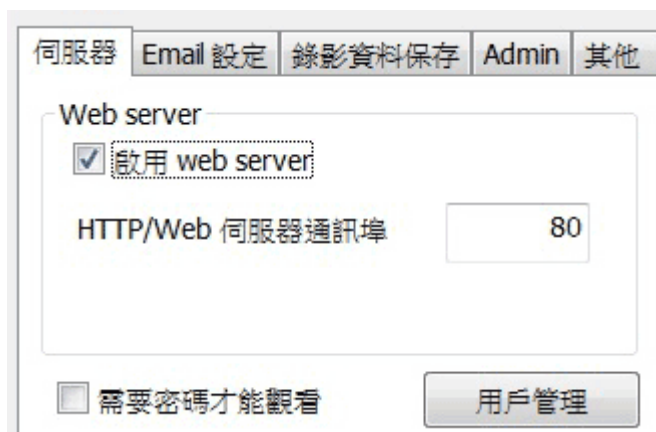


- 啟用 **Web server**

要允許遠端看請打勾。

- **Port**

NetCamCenter 允許您修改通訊埠，若預設通訊埠已被佔用，請更改為 90、8000、8080 或其他未被佔用之 port。Web 伺服器的預設通訊埠為 80，若 您不使用 80，則遠端監控時必須加上您的通訊埠，例如使用 99 為通訊 埠，則遠端監控網址為 http://您的 IP:99。



- 需要密碼才能觀看

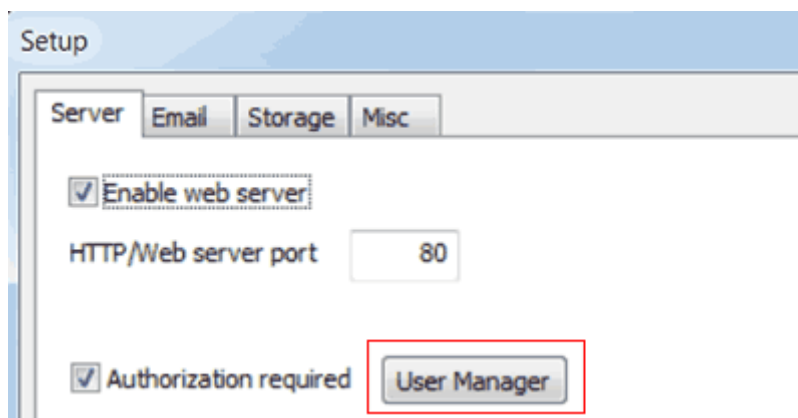
若要以帳號密碼限制遠端觀看，請先選取“需要密碼才能觀看”。然後到 開始 -> 所有程式 -> NetCamCenter -> 按 NetCamCenter User Manger 新增帳號及攝影機權限。詳細說明請參考使用者管理。

## 3.4 管理用戶

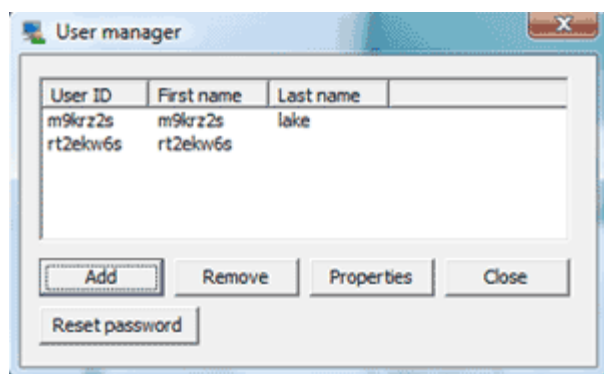
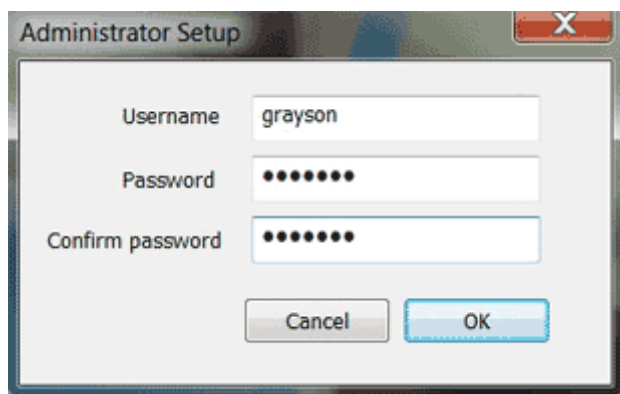
您可以建立帳號限制 IE 連線觀看時必須輸入帳號密碼及觀看指定的攝影機。

## 設定 User Manager

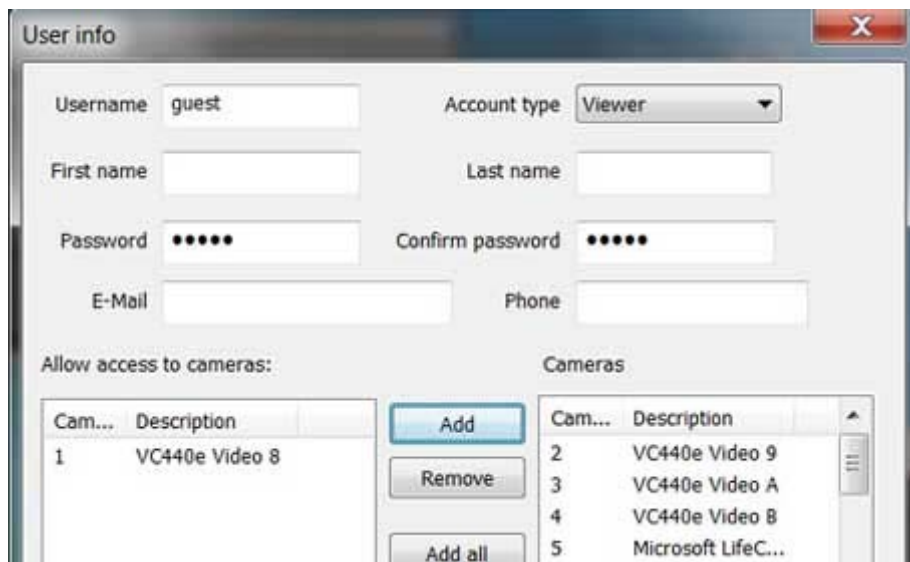
1. 在 CamCenter 按設定，在“伺服器”頁選取需要密碼才能觀看



2. 按“用戶管理”



3. 當下列視窗出現時輸入想要的密碼於 Password 及 Confirm Password，並按 OK (第一次設定會出現此視窗，請記得您輸入的密碼。設定後，每次新增或修改帳號時，皆需要輸入密碼)



## 移除使用者

使用者選擇要移除的使用者.

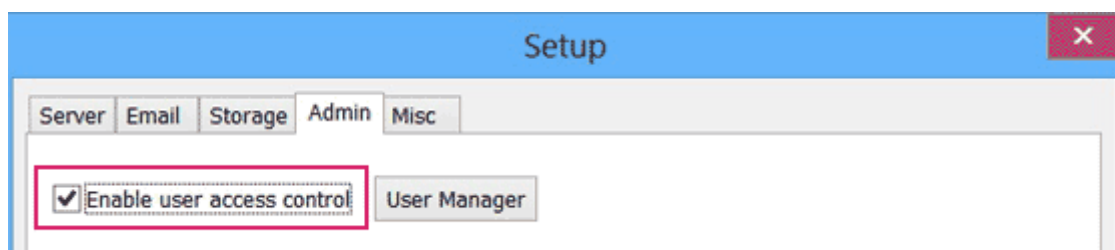
## 編輯使用者資料

Select a user ID and then click **Properties**.

## 需要密碼才能觀看

此功能僅限專業版

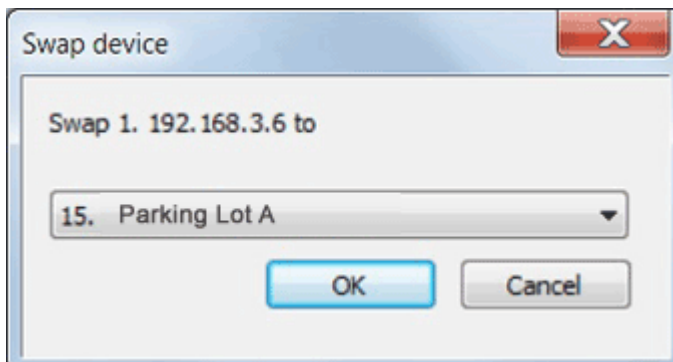
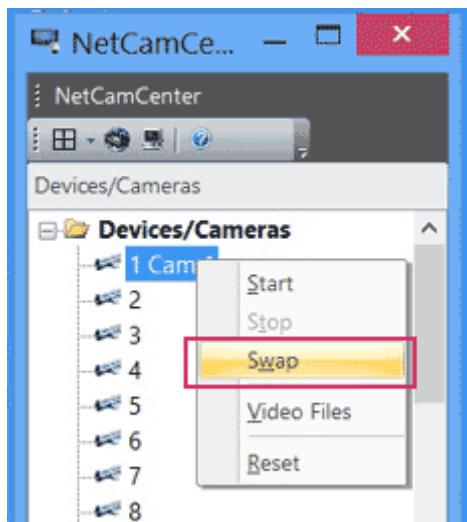
1. 要啟用此功能.請在 CamCenter 的 **Admin** 設定頁, 在**需要密碼才能觀看** 打勾
2. 按下 **OK**.



## 3.5 替換攝影機或裝置順序

若要修改攝影機的順序,

- 在攝影機清單選擇要更改的攝影機後按下右鍵
- 選擇 **Swap**.



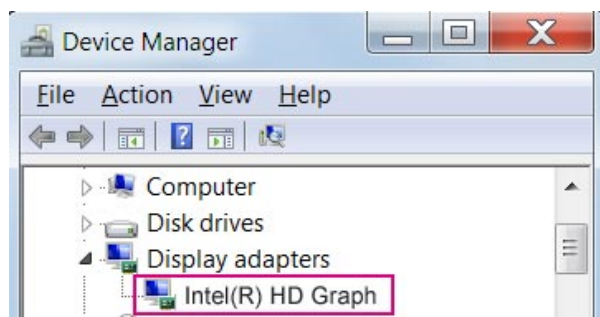
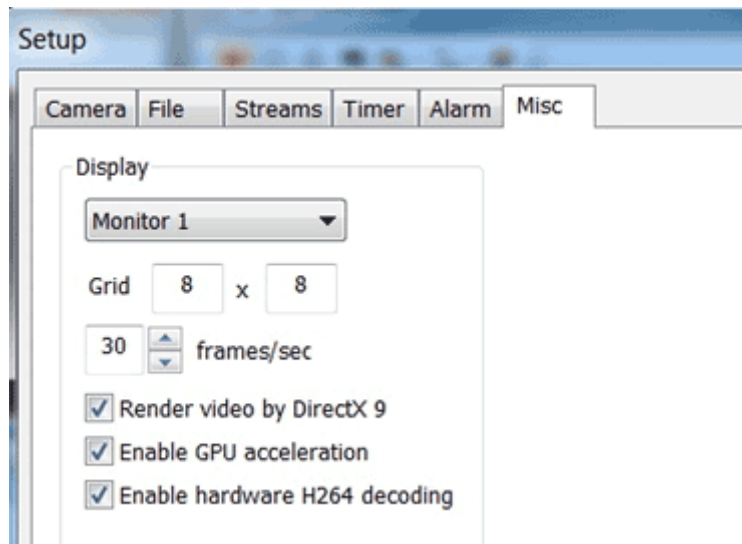
- 選擇另一支攝影機後按 **OK**.

## 3.6 Misc

### Enable GPU acceleration

此功能僅限用 NetCamCenter 專業版 3. 欲啟動此功能必須符合以下硬體規格

- Intel HD 顯示卡(如下圖)
- Intel Core i5 以上 CPU. 您可到 [Intel 網站](#) 查詢您的 CPU 是否支援 Intel Quick Sync Video



## 4. 影像視窗

### 4.1 控制 PTZ 攝影機

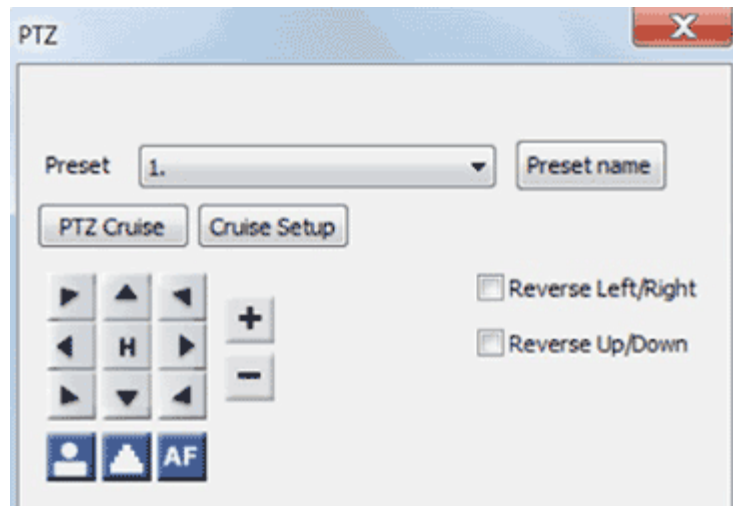


To control a PTZ camera, click the PTZ button. You can then use the mouse to control the camera by clicking on the buttons. To adjust the camera to the preset position, select the preset number from the list.

You can also use keyboard for PTZ control. (with or without the PTZ control panel on the screen)  
This does not apply to Canon's camera.



Left	←, 4
Right	→, 6
Up	↑, 8
Down	↓, 2
Up right	9
Up left	7
Down right	3
Down left	1
Zoom In	+
Zoom out	-



## Reverse Left/Right

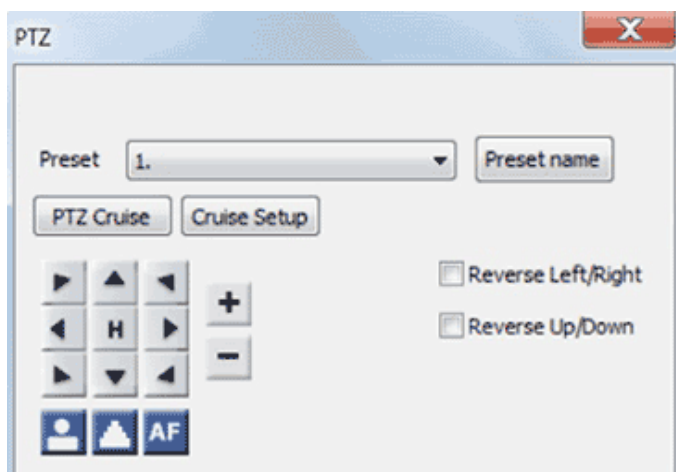
Check this box if you wish to reverse the left-right PTZ control.

## Reverse Up/Down

Check this box if you wish to reverse the up-down PTZ control.

## 4.2 設定 PTZ cruise

- Click PTZ button.
- Click **Cruise Setup**.



- **Preset name**

To add a track, select a number from the Preset list. Enter the duration that the camera should stay in that position. Click Add.

- **Adding a track**

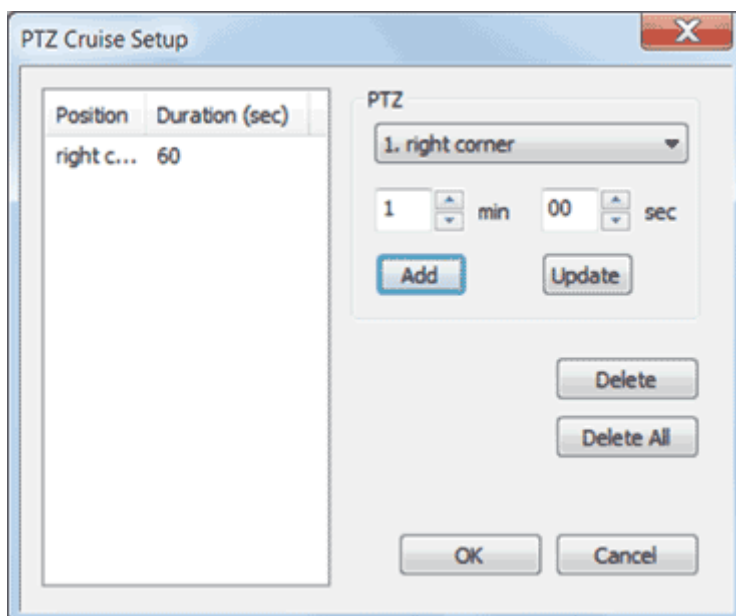
To add a track, select a number from the Preset list. Enter the duration that the camera should stay in that position. Click Add.

- **Editing a track**

Click a position on the left pane. To change the position, select a number from the Preset list. Set the duration. Click Update.

- **Deleting a track**

To delete a track, click a position on the left pane. Click Delete. Once you've finished, click OK.



- **Enable PTZ Cruise**

To enable PTZ Cruise click **PTZ Cruise** on PTZ tab.

## 4.3 數位 PTZ

- Drag and select an area on a video window to zoom in.



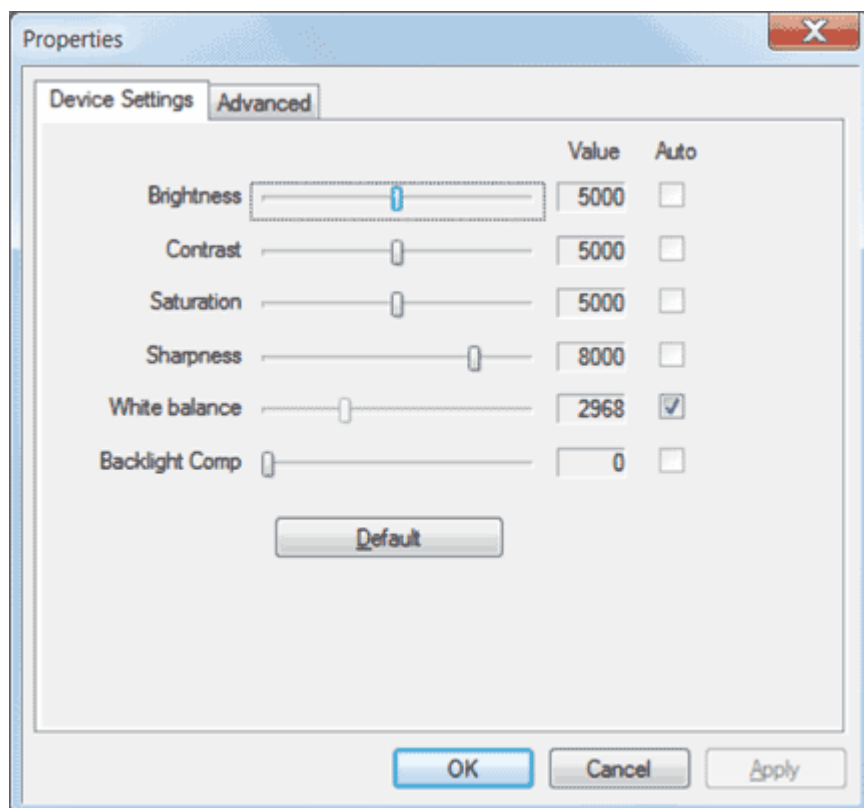
- After dragging an area, a software PTZ window will be displayed and allows you to control the area for zoom in. Just click the button on the left pane to move the red rectangle to adjust the selected area.



## 4.4 調整影像擷取裝置的聲音與影像

To adjust brightness, contrast, or hue, click on 

The adjustable configuration settings depends on the driver of your hardware.



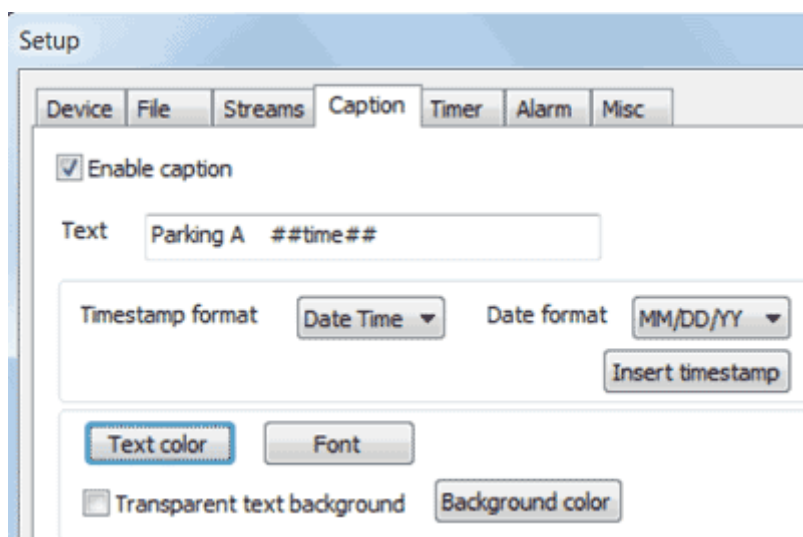
## 4.5 字幕

### Configuring caption for a capture device

NetCamCenter allows you to set caption on the recorded video. Note This feature does not apply to IP camera and video server.

To setup caption

- Click Setup. Select **Caption** tab.
- Check **Enable caption** box to enable caption.



#### Text

To display desired text caption on your video, simply type the text in the **Text** field. You can also enter desired text after or before the time code.

#### Text Color

Click **Text color** to select desired color for text.

#### Font

Click on **Font** button to change the font type, size or color of the caption.

#### Insert timestamp

Click on **Insert timestamp** button put up a timestamp.

#### Transparent text background

Check this box if you wish to have transparent text background. To set background color of the text string,

- Uncheck Transparent text background box.
- Click Background color. Select a color and then click OK.

For better performance it is highly recommended that you use your IP camera's caption function to add timestamp and text.

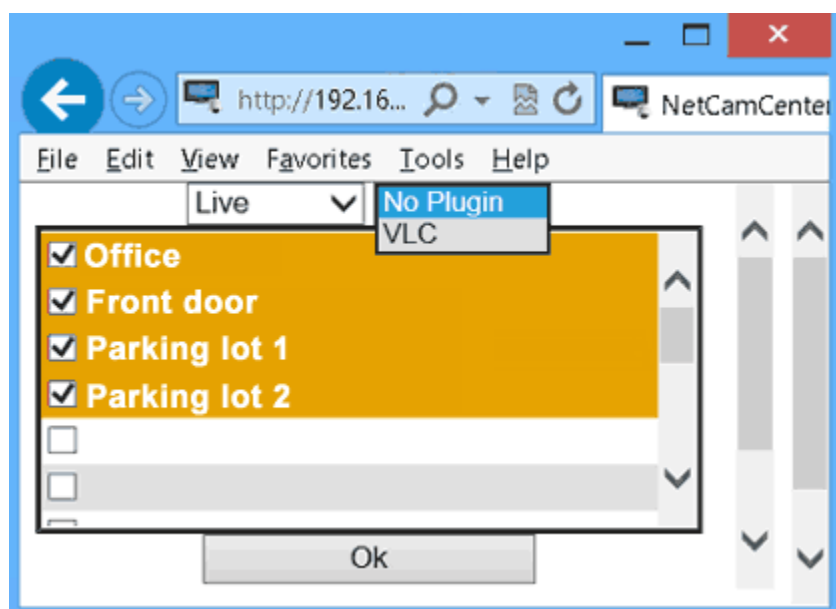
## 5. 遠端監看

### 5.1 即時監看

若您的 IP 為 192.168.x.x, 10.0.x.x, 欲從外部網路觀看，您必須設定防火牆或 IP 分享器。(註: 您的設備必須支援 port forwarding 或是 虛擬伺服器才能從 Internet 觀看。)

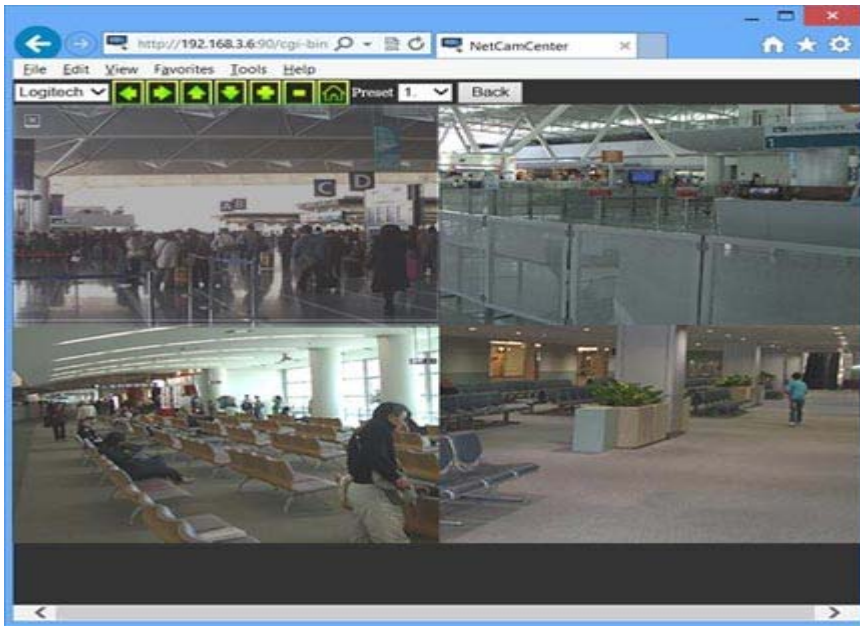
若要遠端連線觀看，請在 IE 輸入 NetCamCenter 的 IP 位址。若 port 不是 80，請在網址後加上通訊埠號碼，如 http://211.1.12.3:90

選擇要觀看的攝影機後按 **OK**



**PTZ 控制** To control your PTZ camera,

- Select a desired camera from the list.
- Click an arrow or select a number from the **Preset** list.



## 5.2 使用手機與平板遠端監看

1. 啟動瀏覽器
2. 輸入 NetCamCenter IP

若要遠端連線觀看，請在 IE 輸入 NetCamCenter 的 IP 位址。若 port 不是 80，請在網址後加上通訊埠號碼，如 <http://211.1.12.3:90>



Apple iPhone



Android



Windows Phone 8



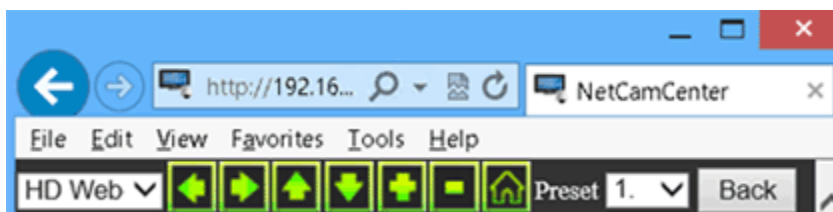


選擇要觀看的攝影機後按 **OK**

### PTZ 控制

To control your PTZ camera,

- Select a desired camera from the list.
- Click an arrow or select a number from the **Preset** list.

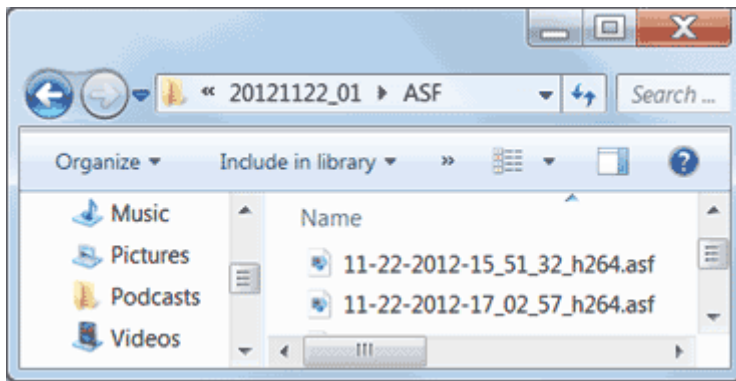


## 6. 網路攝影機錄影

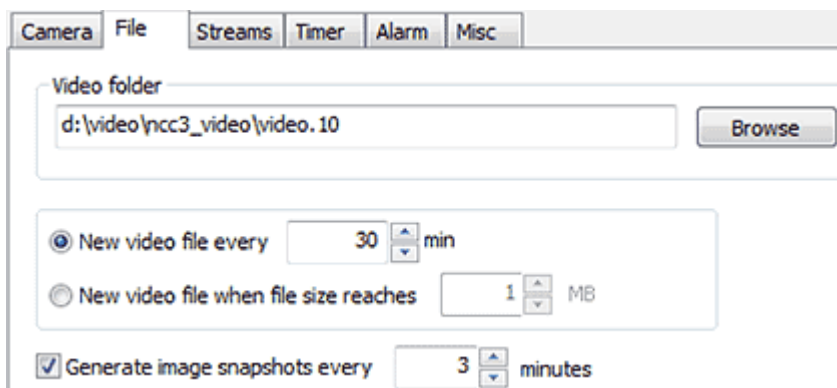
### 6.1 設定網路攝影機錄影

在 CamCenter 按設定，到檔案設定頁如下圖所示：





保留 **x** 天的錄影檔案 輸入您希望錄影檔案剩下多少天數時，自動刪除舊的錄影檔案。



### 錄影檔路徑

設定存放錄影檔案的目錄。錄影檔案的命名方式為: 月-日-年-時-分-秒.asf，您可選擇將不同攝影機之錄影檔案存於不同磁碟。

### 限制錄影檔案大小

限制錄影檔案的大小，當達到限制時，自動寫新的錄影檔案。

### 每 **x** 分鐘產生快照

若選取此設定，當錄影啟動時，NetCamCenter 會在錄影目錄下產生快照。



保留 **x** 天的錄影檔案

輸入您希望錄影檔案剩下多少天數時，自動刪除舊的錄影檔案。

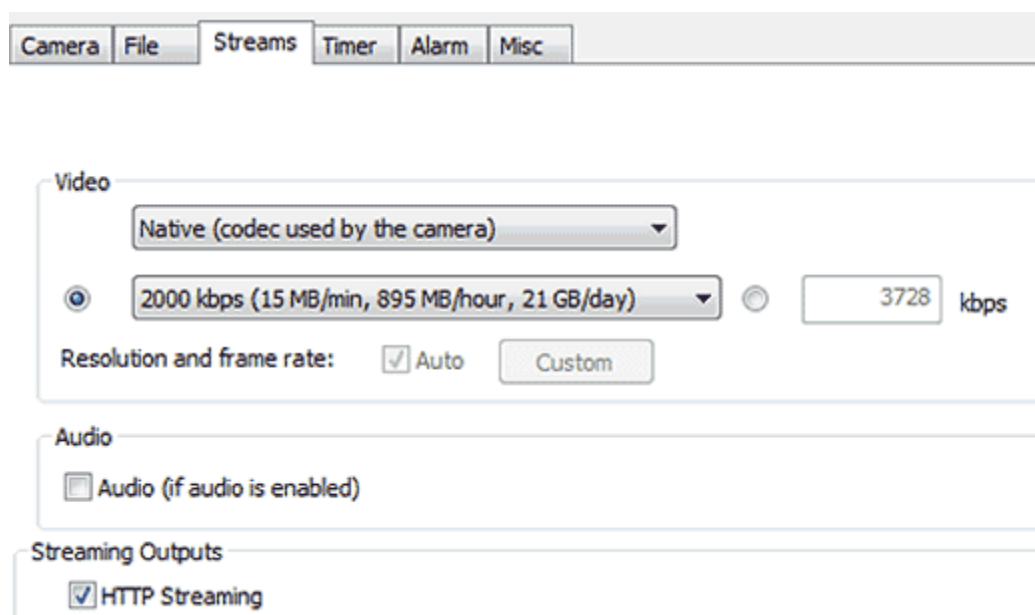
### Enable VCR

- Click on **Setup** button on the video window.
- Select **Turn recorder on** on the DVR list.



## 6.2 串流

To change recording data rate, click **Setup** and then go to **Streams** tab. The quality of your recorded screen images can be affected by the amount of motion that occurs during the recording process. For high-motion content or resolution greater than 640x480 you may want to select higher data rate to have better video quality.



### Compression data rate

You can calculate video file size by referring to the following table. The video file produced by NetCamCenter is highly optimized for streaming. Your connection speed will influence the smoothness of your video if you view the video from the Internet.

### Audio

To record audio, check this box and make sure that Audio is enabled on **Camera** tab.

## HTTP Streaming

Check this box to enable live viewing.

### Note

- The following table is for reference only. The actual file size may vary depending on the video content and frame rate.

Compression ratio if select Windows Media encoding	
384 kbps	2 MB/min, 129 MB/hr, <b>3 GB/day</b>
512 kbps	4 MB/min, 229 MB/hr, <b>6 GB/day</b>
768 kbps	6 MB/min, 337 MB/hr, <b>8 GB/day</b>
1000 kbps	8 MB/min, 450 MB/hr, <b>11 GB/day</b>
1500 kbps	11 MB/min, 632 MB/hr, <b>15 GB/day</b>
2000 kbps	15 MB/min, 895 MB/hr, 21 GB/day
3000 kbps	22 MB/min, 1.3 GB/hr, 32 GB/day
4000 kbps	30 MB/min, 1.7 GB/hr, 41 GB/day
5000 kbps	38 MB/min, 2.1 GB/hr, 51 GB/day
6000 kbps	45 MB/min, 2.6 GB/hr, 62 GB/day
7000 kbps	51 MB/min, 3.0 GB/hr, 72 GB/day
8000 kbps	59 MB/min, 3.4 GB/hr, 82 GB/day
12 Mbps	89 MB/min, 5.1 GB/hr, 123 GB/day
16 Mbps	118 MB/min, 6.8 GB/hr, 164 GB/day

Note : Lower data rate makes the file size smaller, but lowers the video/audio quality. Higher data rate

produce high quality video/audio but increases the file size.

## 6.3 設定硬碟剩餘空間及循環錄影

在 CamCenter 按設定，點錄影資料保存設定，如下圖所示：

The screenshot shows the 'Recording Data Storage' configuration window. It includes tabs for '伺服器' (Server), 'Email 設定' (Email Settings), '錄影資料保存' (Recording Data Storage), 'Admin', and '其他' (Other). The '錄影資料保存' tab is active. It contains three main settings: a checked checkbox '保留' (Keep) with a value of 30 and the label '天的錄影檔' (days of recording files); an unchecked checkbox 'Reserve' with a value of 32 and the label 'G free space on HD'; and a 'Cloud storage' section with a text input field and a 'Browse' button. At the bottom, there is a 'Max storage size' field set to 1000 MB.

保留 **x G** 硬碟空間：

輸入您希望硬碟剩下多少 GB 時，自動停止錄影或是刪除舊的錄影檔案。預設值為 32GB，建議勿小於此數值。

保存 **x** 天數的錄影檔案

輸入您希望保留的錄影檔案天數。

## 6.4 上傳網路攝影機錄影檔案至雲端

NetCamCenter can upload recordings to CamNebula cloud service and enable you to view live video and search recordings with your phone and tablet without configuring your firewall. To enable **CamNebula Cloud Remote Recording** please [register a CamNebula Account](#) first. And then on **Cloud** tab of NetCamCenter check **Enable CamNebula** and enter your CamNebula username and access token.

Setup

Camera File Streams Timer Alarm Misc Cloud

CamNebula Cloud Remote Recording

☒ Enable CamNebula

User

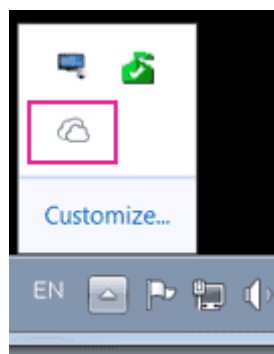
Access  

Camera access token looks like B686A7C6E2B4. You can find your camera access token on your CamNebula page.

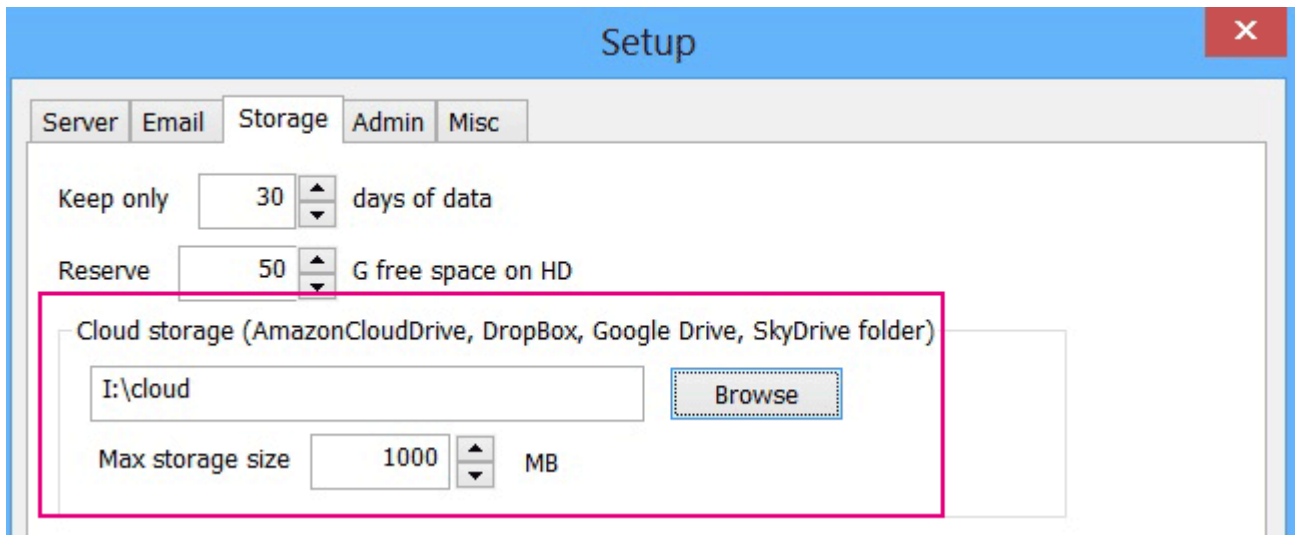
## CLOUD STORAGE

NetCamCenter supports saving your recordings to Amazon Cloud Drive, Dropbox, Google Cloud, and SkyDrive. To save your uplink bandwidth the remote recording bit rate is limited to 160 kbps. To enable this feature, please follow the instructions below.

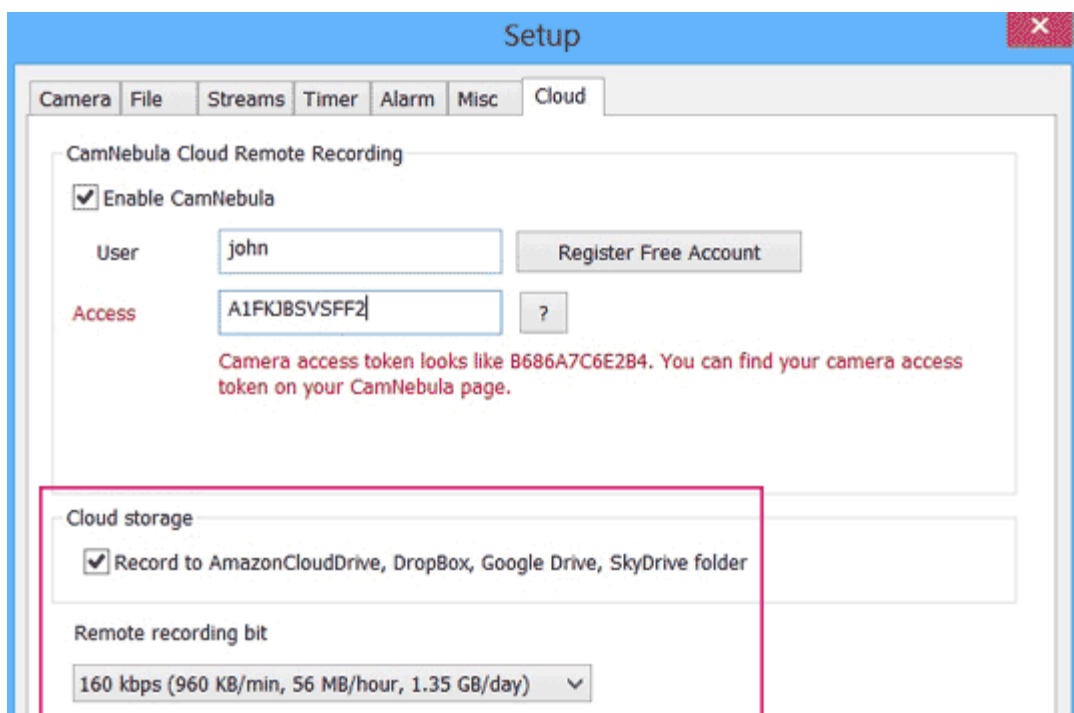
- Install related cloud drive client to enable this feature. For example, if you wish to save your recordings to SkyDrive, please install SkyDrive and then start SkyDrive.



- After installation of related cloud client, check your cloud drive sync folder on your computer.



- Click **Setup** on CamCenter, go to **Cloud** tab. On the **Cloud storage** section, Check **Record to Amazon Could Drive, Dropbox, Google Cloud, SkyDrive**.



## 6.5 搜尋錄影檔案

- To search for videos,

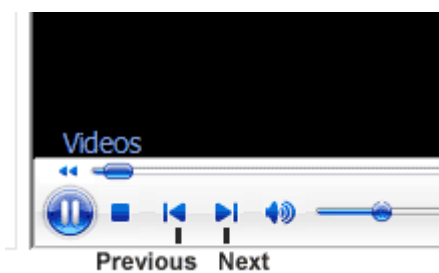


Click on **View** button and then select **Playback** on IE.

- Select desired cameras.
- Select a **Search Type**. Select alarm if you want to search only for video captured in motion detection.
- Specify the **Start** date and time.
- Enter the duration.
- Click **Search**. (The search time depends on the computer and network speed.)



To play the next video, click on Next button.



## 6.6 錄影檔案維護

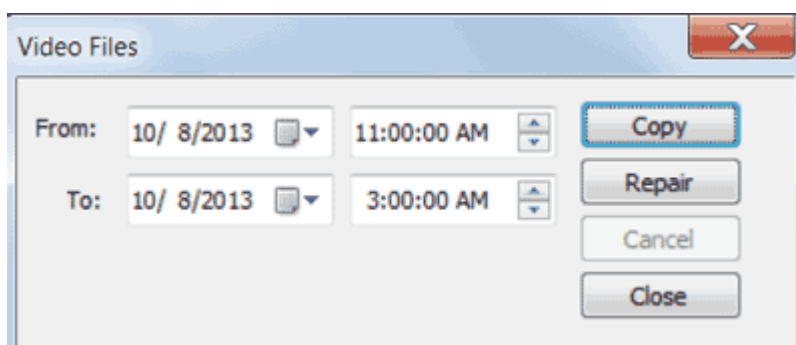
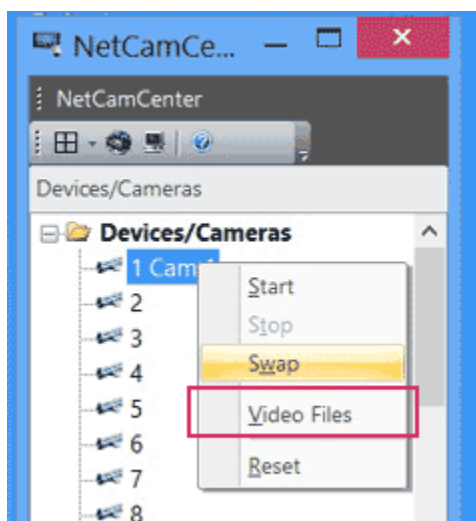
To copy, or repair video files for a camera, right-click the camera name in **CamCenter** first. Then, select the start and end time first.

### Copy video

To copy videos to a desired folder, click on Copy videos videos. Select a folder. Click OK. NetCamCenter will start coping the videos to the selected folder.

### Repair video

If the recorded video cannot be fast-forwarded, you can click Repair videos. Select Start and End time, and then click Repair videos.





## 7. 設定動作偵測

您可自行設定當 NetCamCenter 偵測到動作或是連接裝置的 I/O 變化時，應執行哪些動作。設定重點如下：

- 分鐘後啟動移位偵測
- 偵測到狀況時，啟動錄影、電話通知、外部程式或是警報
- 選擇偵測範圍、調整偵測敏感度
- 設定 I/O (請參考支援的攝影機)

### Alarm settings

- **x 分鐘後啟動移位偵測**  
預設值為 0 分鐘，您可設定較長的時間，以避免離開時，NetCamCenter 偵測到您的身影，自動啟動警報裝置。
- **啟用警報前緩衝錄影，預錄 x 秒**  
要啟動預錄功能請選此項設定。設定儲存動作發生前多少秒的畫面。(註：若此攝影機畫面常變化，不建議選取此項設定。若使用外部裝置觸發警鈴，啟動警鈴前請先關閉外部裝置。)
- **X 秒後回歸正常狀態**  
當偵測到動作啟動警鈴後，多少秒畫面沒變化時，回復到正常狀態。

裝置設定
錄影檔案
串流
Timer
**警報**
其他
Cloud

分鐘後啟動動作偵測
Email

☒ 啟用警報前緩衝預錄，預錄
秒
秒後回歸正常狀態

當有下列狀況時啟動警報

☒ 偵測到動作

☐ 聲音偵測

GPIO 輸入觸發

Device failure notification
☐ Lost connection

警報動作

☒ 啟動錄影
☐ 最大化視訊視窗

☐ 發送
封 email 警訊

☐ 警報音效

觸發 GPIO

## 當有下列狀況時啟動警報

### 偵測到動作

若您希望當畫面有變化時，啟動警報，請選此項設定。要進一步設定移位偵測 請按設定。

- 畫面變化超過 x % 時觸發警報

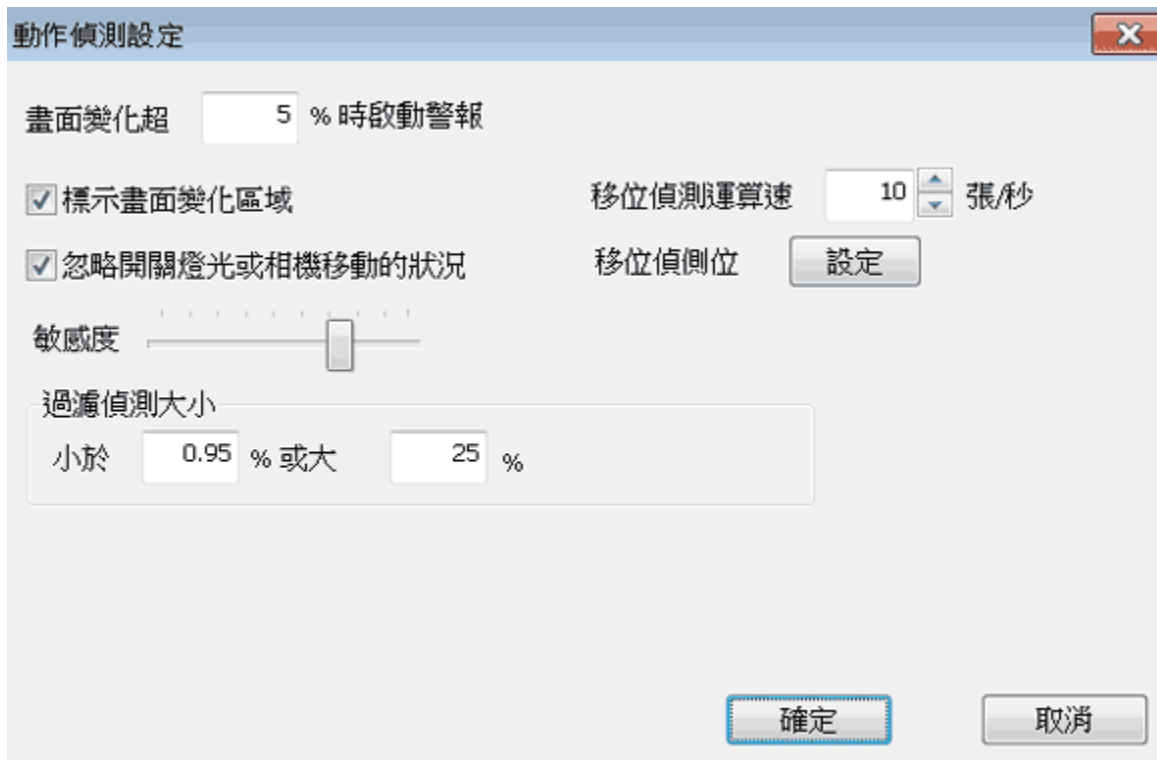
當 NetCamCenter 偵測到畫面變化超過設定值時，會啟動警鈴。

- 標示畫面變化區域

NetCamCenter 會將畫面變化區域標示紅框。

- 忽略開關燈光或攝影機移動的狀況

您可選取 "忽略燈光變化"，NetCamCenter 會忽視開燈關燈的燈光變化，不會啟動警報。



- 敏感度

若您所拍攝的環境較靜態，您可選取較高的敏感度。您也可以降低 NetCamCenter 敏感度，若您所拍攝的環境較動態，例如風吹影響到 光線晃動。

- 移位偵測運算速度

調整動作偵測的速度，速度越快，CPU 使用率越高。

- 移位偵測區域

您可以設定多個移位偵測範圍，限制範圍內有動作時，才啟動警報。請 按 "選擇區域"，按下滑鼠在視窗內拉出偵測範圍後放開。要清除剛剛 畫的區域，請按 "清除上一個加入的區塊"。按清除區域，則所有區域 皆會被清除。

### 反選

若只有小範圍不需偵測，您可選取該區域後，選擇反選。NetCamCenter 會偵測選擇區域範圍以外的地方。

## 偵測到移動時，執行下列動作

若您設定啟動錄影及警報，NetCamCenter 會執行到動作停止後，結束錄影 及警報。

- 啟動錄影

若您希望偵測到移動時立即錄影，請選取此項設定。

- **發電子郵件通知**

若您選取 "發電子郵件通知"，您必須確定您在 Microsoft Outlook/Outlook Express 或其他 MAPI 相容的電子郵件軟體中的電子郵件帳號設定正確，可以發信。偵測到入侵者時，NetCamCenter 會立即發電子郵件通知，並附上現場拍攝畫面。您也可以使用 NetCamCenter 內建的 SMTP 支援，欲使用 SMTP 支援，請先[設定 SMTP](#)。

- **播放警報聲**

若您希望播放警報聲，請選取此項設定，並選擇想要的警報聲，此音效檔必須是 wav 檔。您也可以使用 NetCamCenter 所附的音效檔案，請按 "瀏覽"，然後到 NetCamCenter 目錄，若您安裝時未更改路徑，可在 c:\Program files\Webcam\NetCamCenter 目錄下，找到 NetCamCenter 所附的 2 個音效檔，您可以選擇其中一個後，按下試聽，以決定使用哪個音效。

### 啟動警報

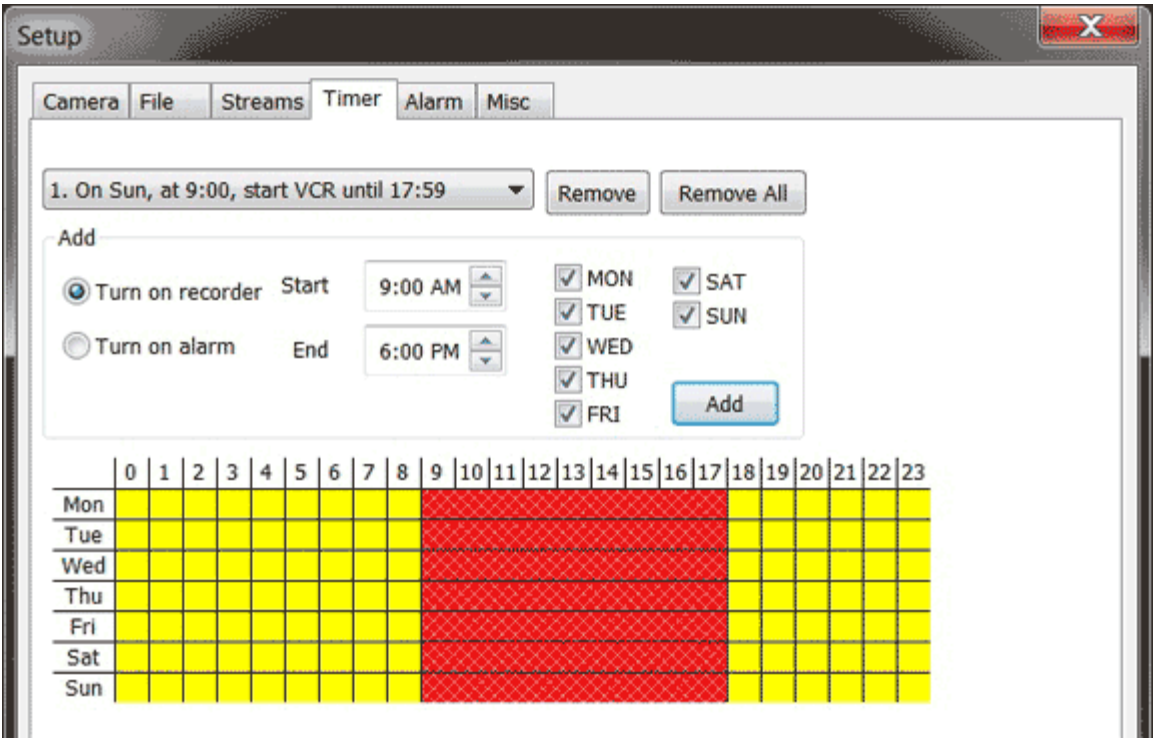
- 完成後請到攝影機設定頁.
- 選擇**啟動警報**



# 8. 排程

To add a schedule for a camera

- Click **Setup** on a video window.
- Select **Timer** tab. Specify **start** and **end** time.



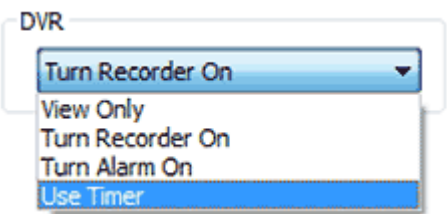
- Select **Turn on VCR or motion detection**. You can have NetCamCenter to start recording or enable motion detection in the appointment.
- Select the days.
- Click **Add**.

To remove a schedule

- Select a schedule from the list.
- Click remove to remove the schedule.

## Enable Timer

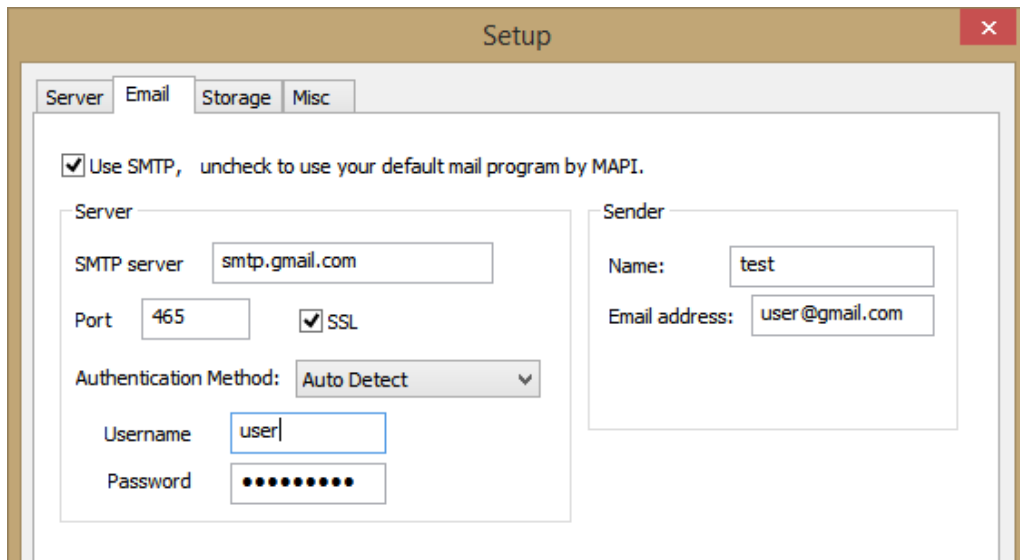
- Click on **Setup** button on the video window.
- Select **Turn recorder on** on the DVR list.



## 9. 設定 email

若您未安裝設定 email 程式, 請依下列步驟設定

- Click **Setup** on CamCenter and then select **Email** tab.
- Check **Use SMTP** box.



The screenshot shows the 'Setup' window with the 'Email' tab selected. The 'Use SMTP' checkbox is checked, with a note: 'Use SMTP, uncheck to use your default mail program by MAPI.' The 'Server' section contains the following fields: 'SMTP server' (smtp.gmail.com), 'Port' (465), 'SSL' (checked), 'Authentication Method' (Auto Detect), 'Username' (user), and 'Password' (masked with dots). The 'Sender' section contains the following fields: 'Name' (test) and 'Email address' (user@gmail.com).

- Enter your name and email address in the User Information section.
- **Server** Enter the SMTP server. If you don't know the SMTP server, please contact your ISP to get the information.
- If your SMTP server requires authentication, please select Yes in Authentication method and enter your username and password.
- Check Auto Connect to the Internet box to have NetCamCenter connect to Internet and send the email automatically.

If you check this box, you need to configure the setting in Internet Explorer. On the Tools menu in Internet Explorer, click Internet Options -> Connections

If your modem connection is not listed in the Dial-up settings, please add it. Check Dial whenever a network connection is not present.

- Click OK.

## 10. 重設 IP 攝影機

To reset a camera settings, right-click on the camera name on CamCenter and then select **Reset**.

